

PSI

*Making Lives Healthier,
in Partnership*

2007 Annual Report

Inside:

Client Testimonial 2

*A Message from our
President & CEO 3*

Highlights from 2007 4

Graduation Update 5

PSI's Programs 6-8

A Success Story 9

Financial Statement 10

Leadership Team 11

Locations Back Cover

*Throughout this report you will also
find PSI's historic timeline & artwork
by some of our very talented clients.*

“This is a picture of me before I came to PSI. That’s the power of this program.”

-Tyrone



PSI'S ROOTS, GROWTH & ART (BY OUR CLIENTS)



EARLY 80's AIDS is, for many, a mysterious and frightening illness. As it begins to strike increasing numbers of residents in drug treatment programs, it becomes abundantly clear that the needs of people struggling with both the disease and substance abuse require resources beyond the capability of existing programs.

A MESSAGE FROM PSI'S PRESIDENT & CEO

It's been 20 years since our founders first gathered to address the needs of people with HIV/AIDS and substance abuse issues. Since then, we've opened 5 locations in three boroughs and expanded our mission to include all people with HIV/AIDS. Today, our team of professionals assists clients with almost every issue brought to our doorsteps. Thousands have achieved a healthier and happier life in partnership with PSI. That's success.

In 20 years, AIDS has changed. Therapies and medicines have vastly improved. Our clients have also changed, as have their unique medical and psychological needs. PSI has responded to these changes by evolving to serve our clients wherever we see a need. The passion that initially inspired our founders is still present. Each staff person at PSI interacts with our clients daily. Clients are involved with activities at every PSI location. They fill our halls with inspiration as we literally watch lives get healthier, so we truly can never, not for a moment, forget why we're involved with PSI.

In the future, we will continue to expand our services to ensure that more New Yorkers have access to the help they desperately need. We will maintain and strengthen our community relations as we will rely on community involvement to maintain our growth and reach new clients.

Thank you for your support throughout the years. Without continuous support and trust, none of the work we've accomplished would have been possible.



1988

Palladia (formerly Project Return) and Samaritan Village join forces to respond to the needs of the new and growing population of people with HIV and chemical dependency. Their joint venture will later become known as PSI.



*Aujourd'hui le Soleil est
Brillante, N'est-ce pas? –
by Joseph N*

2007 HIGHLIGHTS

- Primary Medical Care facilities opened at ADHC's operated by PSI in Brooklyn, the Bronx and Queens. These clinics provide comprehensive HIV medical services, medical case management, and mental health services.
- PSI's Medical Care Providers became accredited HIV Specialists by the American Academy of HIV Medicine, ensuring that Accredited HIV Specialists are working with clients at each location.
- After being honored at Graduation, 40 volunteers worked with PSI's staff, assuming responsibility for a variety of tasks. These volunteers serve as role models to new clients who can actually witness PSI success stories.
- PSI's medical team developed a comprehensive diabetic self-management program.
- New York State Department of Health AIDS Institute recognized the accomplishments of our Medical Director, Dr. Barbara Zeller, by presenting her with a 2007 Linda Laubenstein Award for Excellence in HIV Clinical Care.
- PSI was awarded a grant by the Robin Hood Foundation to increase the psychiatric services available at the Queens site, and to underwrite the costs for the Literacy and Vocational program. This funding will allow PSI to develop a vocational job-training program.
- PSI increased mental health program thanks to a grant from the HIV Care Services division of Public Health Solutions (*formerly Medical and Health Research Association*) of New York. This funding allowed PSI to increase individual, group and family counseling to address the impact of HIV on the client and the family while organizing HIV care coordination with health care providers to improve clients' adherence to treatment.



The Pain I Put Myself Through
– by Deborah

1990

PSI opens a 66 bed Residential Health Care Facility (RHCF) with financial assistance from Housing Enterprise for the Less Privileged (HELP) and Burchman Terrio, an urban planning and development consulting firm.

***In 2007, 92 people were recognized at
PSI's Annual Graduation Ceremony***



Since 1993, over 900 people have earned this honor.

***Residential Health Care
Qualifications to Graduate:***

9 Months of Sobriety

Beginning Reentry Phase of Treatment
*(This is when clients begin efforts to gain
financial and housing independence.)*

***Adult Day Health Care
Qualifications to be inducted
into the Honor Society:***

9 Months Enrolled in ADHC program

6 Months of Sobriety

Compliant with Care Planning Goals

1993 ***PSI hosts its first annual graduation ceremony and
induction into the honor society.***



PSI RESIDENTIAL HEALTH CARE FACILITY

PSI operates a 66 bed residential health care facility that provides comprehensive medical, mental health, social work and substance abuse treatment services to people living with AIDS in a modified therapeutic community.

- Assessment of Client's Biopsychosocial Status
- Primary Care
- Gynecology, Ophthalmology, Dentistry, Lab & Imaging
- Specialized AIDS Care
- 24/7 Nursing
- 24/7 Substance Abuse Counseling
- Pharmaceutical Services
- Physical Therapy
- Holistic Therapy, Acupuncture and Massage
- Art Therapy
- Prepared Meals and Nutritional Counseling
- Gym and Personal Physical Fitness Training
- Specialized Classes, including topics such as HIV/AIDS, STDs, Anger Management and Personal Finance Management
- Family, Group and Individual Mental Health Counseling
- 12-Step Groups
- Chaplain/Pastoral Services
- Social Work, Case Management, and Entitlement Services
- Occupational Therapy/Job Readiness
- Family Reunification and Parenting Seminars
- Special Events and Social Networking Opportunities

HELP/PSI SERVICES CORP PRIMARY CARE

PSI's Diagnostic and Treatment Centers offer a full practice of general and specialized primary medical treatment and prevention services to people with limited access to healthcare; such as low income and uninsured populations, those with limited English proficiency and individuals and families experiencing homelessness. PSI provides specialized care, available to all people living with HIV/AIDS.

- General Medical Care / Community Health
- State-of-the-art specialized HIV/AIDS care
- Treatment Adherence Counseling
- Hepatitis C Treatment
- HIV Testing
- Laboratory Services
- Holistic and Alternative Medical Therapies
- Medical Acupuncture
- Mental Health (Evaluation & Care)
- Specialty Care Referral
- Nutritional Counseling
- Comprehensive HIV Prevention Education

1994

PSI expands its mission to include all people with HIV/AIDS and establishes its COBRA Case Management program, fully licensed by the NY State Department of Health's AIDS Institute.



PSI ADULT DAY HEALTH CARE

PSI's ADHC Programs are licensed Article 28 facilities that offer comprehensive services to adults living with HIV/AIDS manage their medical situation and work toward achieving a balanced healthy life.

- Medical Monitoring and Referrals
- Holistic Therapy, Acupuncture, Reiki and Massage
- Prepared Meals, Food Pantry and Nutritional Counseling
- Gym and Personal Physical Fitness Training
- Metro Cards
- Specialized Classes, including topics such as HIV/AIDS, STDs, Anger Management and Personal Finance Management
- Occupational Therapy/GED and Educational Services
- Mental Health Counseling
- Art Therapy
- Substance Abuse Counseling & Groups, including 12-Step Groups and Relapse Prevention
- Chaplain/Pastoral Services & Spiritual Awareness Groups
- Social Work, Case Management, and Entitlement Services
- Special Events and Social Networking Opportunities

PSI COBRA CASE MANAGEMENT

COBRA provides intensive case management services to HIV-infected and high risk persons, who are identified as having difficulty accessing medical care and/or other services, and who require frequent personal contact and/or home visitation to facilitate and ensure their compliance with medical care and other needed services.

- Assessment of Client's Biopsychosocial Status
- Continuous evaluation of client progress toward stated goals and service plan development
- Implementation of service plan goals in collaboration with client to achieve stability
- Continuous Case Monitoring and Follow-Up
- Crisis Intervention
- Discharge Planning to Appropriate Level of Care

1997

PSI opens an Adult Day Health Care (ADHC) facility in the Bronx.



Pardise – by Carlos C

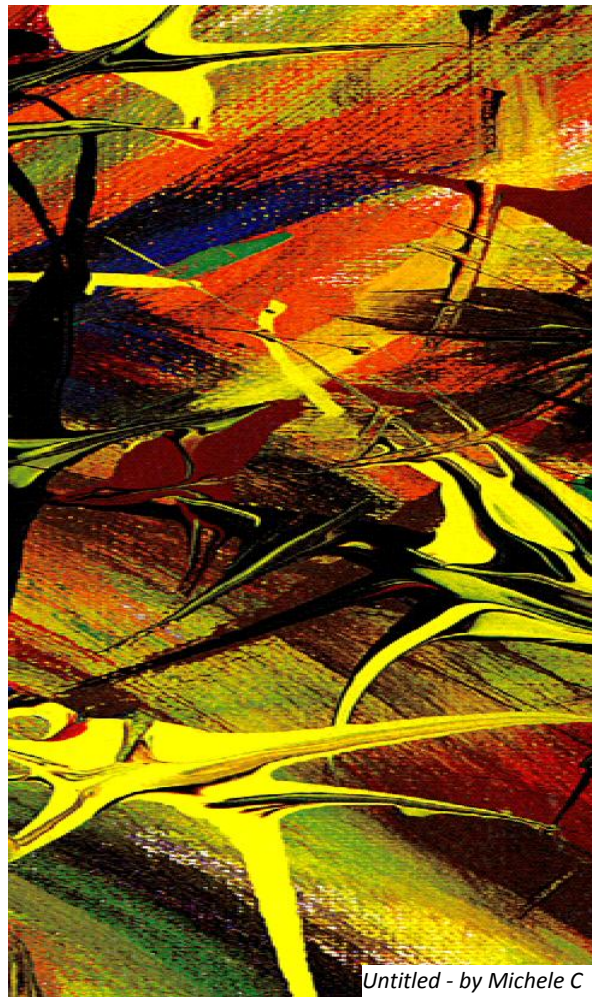
RECREATION & EDUCATION

Our Residential Health Care Facility & Adult Day Health Care Centers provide opportunities for recreation and education. Often missing in the lives of our clients, these activities assist in clients' personal growth and ability to maintain improved long-term physical & mental health.

PSI offers diverse activities to encourage educational, physical, spiritual and social growth. Below is a sample of the wide variety of opportunities available to our clients.

- GED Preparation
- Internet and Computer Training
- Workshops on diversity
- Workshops addressing legal issues related to HIV/AIDS
- Board Games, Trivia Challenges
- Bowling Outings
- Gardening Classes
- Poetry Workshops & Book Clubs
- Exercise, Cooking and Nutritional Instruction
- Dancing, Choir & Music Related gatherings
- Concerts & Movies
- Relaxation Techniques Training
- Occasional Spa Retreats!
- Art Therapy; participants present their work at formal exhibitions and decorate our halls. *Most of the pieces you see throughout this Annual Report were included in our Taking Flight brochure, a collection of artwork created by talented PSI clients.*

Providing opportunities for our clients requires assistance from the community. If you are able to donate space, supplies, time or funds, please contact us at (718) 681-8700.



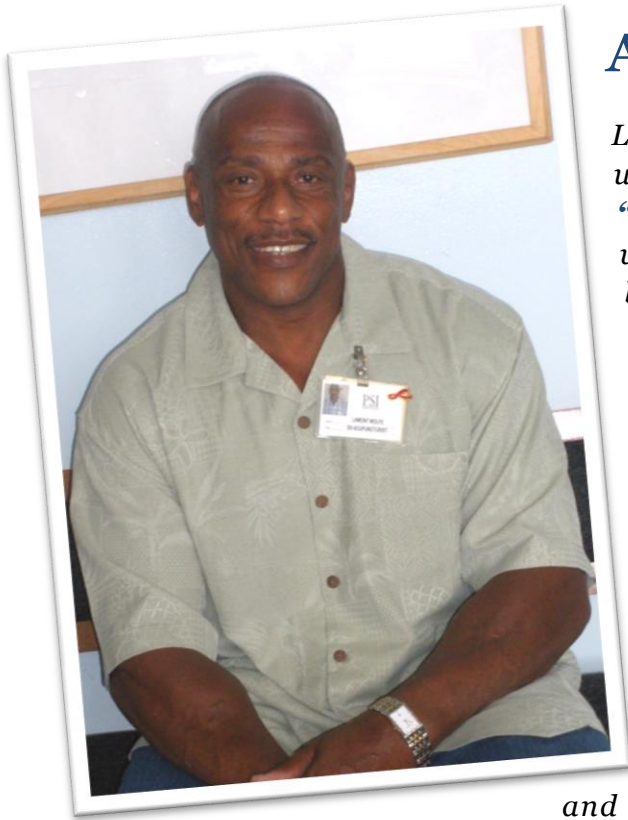
Untitled - by Michele C



Calahan's Beach - by Mary R

1998

Ryan White funds a pilot ADHC facility in Queens.



A SUCCESS STORY

*Lamont is outgoing, personable and uncommonly positive; repeatedly mentioning **“Every day is a blessing.”** Tall and muscular with a sincere smile, he appears to have it all, but his life has been full of challenges.*

Since his early 20’s Lamont has been battling drug addiction and dealing with the loss of close friends and family. He lost a son to heroin and a long-time girlfriend to AIDS-related cancer. After his first attempt at sobriety, he relapsed and spent years incarcerated and living the life of an addict.

In 2004 Lamont came to PSI’s Adult Day Health Care program looking for change. Not only did he become healthier, he became such a positive motivational force, for staff and clients, that he was accepted as a PSI Peer

Counselor, assisting others in achieving sobriety. He also returned to school, became a certified acupuncturist and was hired to work with PSI!

*Today Lamont exercises regularly, eats well and meets quarterly with a PSI doctor who monitors his health. He is drug-free, his viral load is undetectable and his T cell count is high. When asked how he felt about PSI, he responded, **“The program has been magnificent, affording me so much knowledge about HIV/AIDS and allowing me to give back to people who are struggling with sobriety.”***

2004 **PSI opens an ADHC facility in Brooklyn.**



PSI FINANCIAL STATEMENT (year end 12/31/2007 & 2006)

<i>Assets</i>	<i>2007</i>	<i>2006</i>
Total Current Assets	\$5,817,146	\$6,370,839
Total Other Assets	18,032,503	18,349,843
Total Assets	23,849,649	24,720,682
<i>Liabilities and Net Assets</i>		
Total Current Liabilities	\$2,887,238	\$3,251,738
Total Long-Term Liabilities	11,014,361	11,427,648
Total Liabilities	13,901,599	14,679,386
Fund Balance - Year End	9,948,050	10,041,296
Total Liabilities and Net Assets	23,849,649	24,720,682
<i>Statement of Revenue, Expenses & Changes in Fund Balance</i>		
Total Patient Revenues	\$21,142,005	\$18,913,016
Total Other Revenues	300,325	670,821
Total Operating Revenues	21,442,330	19,583,837
Total Operating Expenses	21,819,366	19,963,456
Excess (deficiency) of Operating Budget, revenue over expense	(377,036)	(379,619)
Non-Operating Revenues	283,790	620,600
Excess (deficiency) of Operating, revenue over expenses	(93,246)	240,981
Fund Balance – Beginning of Year	10,041,296	9,800,315
Fund Balance – End of Year	9,948,050	10,041,296



2005

The ADHC pilot in Queens becomes permanent and relocates to a newly constructed building.

PSI

PSI Board of Directors

Chair

David Ivill

Vice Chair

David Terrio

Treasurer

Matthew Scanlon

Secretary

Margaret K. Brooks JD, MA

Directors

Carolyn Abernathy
 Joanne J. Brown, CPA
 James D. Cameron
 Maria Cuomo Cole
 Francine Cournos, MD
 Alexis Gadsden
 Clayton Keene
 Radames Montero
 Nigel Pearce
 Lisa-Gaye Robinson, MD

PSI Senior Staff

John Cavallaro, JD
 President and CEO,
 Administrator

Errol A. Chin-Loy
 Chief Operating Officer

Alan Zuckerman, MS
 Senior Vice President, Chief
 Fiscal Officer

Andrew E. Phelps
 Vice President,
 Environmental & Support
 Services

Nunzio Signorella, LMSW,
 CASAC
 Vice President, Ambulatory
 Services

Scott Turner, Esq.
 Vice President, Assistant
 Administrator

Janet Walpole, LCSW
 Vice President, Community
 Health Care Programs

Barbara C. Zeller, MD, DAc
 Medical Director

HELP / PSI

SERVICES CORPORATION

Help/PSI Services Corporation Board of Directors

Chair

Lisa-Gaye Robinson, MD

Vice Chair

Stuart Wesser, MD

Secretary & Treasurer

Matthew Scanlon

Directors

Joanne J. Brown, CPA
 Radames Montero
 Frank Oldham
 Lamont Wolfe

Help/PSI Services Corporation Senior Staff

John Cavallaro, J.D.,
 President & CEO

Errol A. Chin-Loy
 Chief Operating Officer

Alan Zuckerman, M.S.
 Senior Vice President &
 Chief Fiscal Officer

Barbara Zeller, M.D., D.Ac.
 Medical Director

After almost 20 years of guidance from its original founders, today PSI operates independently, under the leadership of our Senior Staff and two independent Boards of Directors (1. PSI, leading our RHCF, ADHC & COBRA teams & 2. HELP/PSI Services Corp, leading our Primary Medical Care facilities). Our leadership team is committed to assisting individuals in bridging the gap between today's struggles and tomorrow's independence.

PSI

Locations

Executive Office &
Residential Health Care Facility

1401 University Avenue
Bronx, NY 10452
(718) 681-8700

Brooklyn Adult Day Health Care &
Primary Care Clinic

803 Sterling Place
Brooklyn, NY 11216
(718) 804-0900

Bronx Adult Day Health Care,
COBRA Case Management &
Primary Care Clinic

1543-1545 Inwood Avenue
Bronx, NY 10452
(718) 299-5500 (Adult Day Health Care)
(718) 299-3000 (C.O.B.R.A.)

Queens Adult Day Health Care &
Primary Care Clinic

105-04 Sutphin Boulevard
Jamaica, NY 11435
(718) 725-5000

Queens COBRA Case Management
& Finance Office

89-31 161st Street
Jamaica, NY 11432
(718) 739-6766

To learn how you can get involved or for more information about PSI's programs,

visit us on line at or contact us at:

(718) 681-8700 or info@projectsamaritan.org